

## 200T/H Automatic Chemistry Analyzer BK-280 (Previous BK-200)

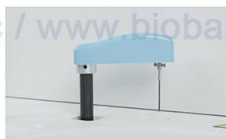


### Features:

- ①. 49 Sample positions.
- ②. 56 Reagent positions.
- ③. 120 Reaction cuvettes.
- ④. 200 tests per hour.
- ⑤. Probe with anti-collision function, liquid level detection function.



**Reaction Tray**  
37±0.2°C,  
real-time monitor.



**Mixer Probe**  
Teflon coating to avoid  
cross contamination.



**Reagent Tray**  
2~8°C cooling  
for 24 hours.



**Sample Probe**  
Liquid level sensor function.  
Anti-collision function. Reagent  
volume real-time detection.



**Software**  
User-friendly  
software.



**Washing Probe**  
Independent 5-step  
washing system.

### Parameters:

Model	BK-280	
Overall Performance	Throughput	200 Tests/hour
	Analysis Method	End-point, Fixed-time, Rate(Kinetic), Turbidimetry
	Certificates	CE, FDA, ISO9001, ISO13485
Sample & Reagent System	Sample Positions	49 sample positions
	Reagent Positions	56 reagent positions
	Sample Volume	2~70µl
	Reagent Volume	20~350µl
	Probe	Teflon coating, with anti-collision function, liquid level detection function
	Probe Washing	Automatic washing interior and exterior
Reaction System	Reagent Cooling	Refrigerated tray with independent switch
	Temperature Control	37±0.2°C
	Cuvettes	120 reusable cuvettes, optical length 6mm
	Mixer Probe	Independent stirring
	Washing	Automatic cuvettes washing
Optical System	STAT Function	YES
	Light Source	12V/20W halogen lamp
	Spectrophotometry	Post-spectral spectrophotometry
	Wavelength	340, 405, 450, 480, 505, 546, 570, 600, 630, 700, 750, 800nm
Calibration & QC	Absorbance	0~3.0Abs
	Calibration	Linear: K factor, 1-point, 2-point and multipoint linear Non-Linear: Spline, Polygon, Logit-4P, Logit-5P
	Quality Control	Real-time QC, Westgard multi rule, Cumulative sum check, Twin Plot(2D), Daily QC, Monthly QC
Data Management	Software	Windows 7/8/10, 32 or 64 bit
	LIS System	Bi-direction, support HL7 protocol
	Interface	LAN port access
Working Conditions	Printer	External optional, multiple reporting mode available
	Power Supply	AC220V±10% 50/60Hz, 110V±10% 60Hz, 300W
	Temperature	15~30°C
	Water Consumption	Deionized water: 5L/H
Size & Weight	Humidity	40%~85%
	External Size (W*D*H)	950*600*515mm
	Net Weight	75kg
	Package Size (W*D*H)	1130*735*1040mm
	Gross Weight	135kg